

Exhibit 8



Lead Free Solder Extreme Temperature Field Test

Location: Death Valley, CA

Date: September 1, 2009

Objective: Test the technical performance of Antaya Technologies' lead free solder alloys on automotive glass in extreme high temperature environmental conditions.

Procedure:

1. Two vehicle types to be tested, one vehicle manufactured by Ford Motor Company, one vehicle manufactured by General Motors.
2. Remove backlight from both vehicles.
3. Solder new OEM backlight with Antaya Technologies' lead free #65 alloy terminals and install in vehicle #1 (Ford)
4. Solder new OEM backlight with Antaya Technologies' lead free #10 alloy terminals and install in vehicle #1 (Chevrolet)
5. Hang a .5kg weight to each terminal.
6. Connect power and ground terminals from vehicle to the terminals.
7. Park vehicles in direct sunlight with backlight facing the direction of the sun.
8. Attach thermocouples to seven locations in each vehicle.
 - a. Car interior
 - b. Outside air (roof of car)
 - c. Outside surface of glass (center)
 - d. Inside surface of glass (center)
 - e. Driver's side terminal
 - f. Passenger's side terminal
 - g. Outside Temperature
9. Close vehicle and monitor temperature for at least thirty minutes prior to start of test.
10. Turn on heat grid in both cars during warmest period of day (2pm to 4pm), continue to cycle heat grid for one hour while recording temperatures at all thermocouple locations every five minutes.
11. When test is complete inspect terminals for any damage or separation from glass.

Antaya Technologies Lead Free Solder Extreme Temperature Field Test Death Valley, CA September 1, 2009

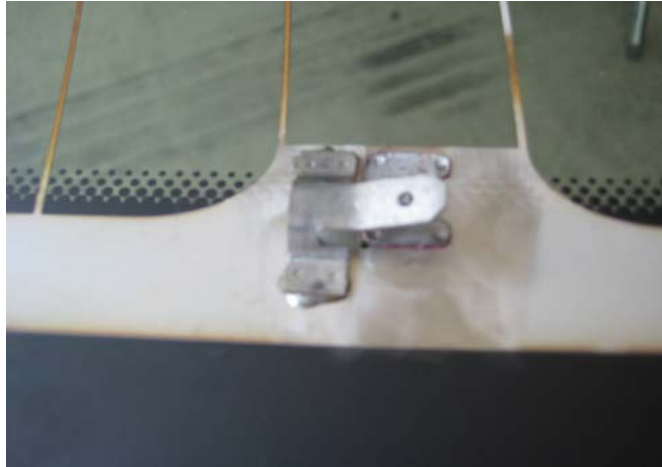
	FORD						#65	CHEVY						#10
Time	1 °F/°C	2 °F/°C	3 °F/°C	4 °F/°C	5 °F/°C	6 °F/°C	7 °F/°C	11 °F/°C	22 °F/°C	33 °F/°C	44 °F/°C	55 °F/°C	66 °F/°C	
2:50	135/57.2	129/53.8	163/72.7	167/75	173/78.3	166/74.4	116/46.6	132/55.5	124/51.1	163/72.7	171/77.2	169/76.1	170/76.6	
2:55	135/57.2	121/49.4	161/71.6	166/74.4	173/78.3	163/72.7		132/55.5	119/48.3	160/71.1	169/76.1	168/75.5	168/75.5	
3:00	136/57.7	124/51.1	159/70.5	165/73.8	173/78.3	161/71.6		132/55.5	122/50	158/70	167/75	168/75.5	166/74.4	
3:05	136/57.7	120/48.8	159/70.5	164/73.3	173/78.3	159/70.5		132/55.5	121/49.4	156/68.8	165/73.8	167/75	162/72.2	
3:10	136/57.7	130/54.4	160/71.1	165/73.8	174/78.8	162/72.2		132/55.5	124/51.1	159/70.5	167/75	169/76.1	166/74.4	
3:15	136/57.7	123/50.5	160/71.1	165/73.8	174/78.8	165/73.8		132/55.5	123/50.5	161/71.6	169/76.1	169/76.1	168/75.5	
3:20	137/58.3	121/49.4	171/77.2	186/85.5	192/88.8	188/86.6		132/55.5	121/49.4	161/71.6	190/87.7	191/88.3	192/88.8	
3:25	136/57.7	118/47.7	165/73.8	182/83.3	189/87.2	181/82.7		132/55.5	120/48.8	151/61.1	186/85.5	189/87.2	190/87.7	
3:30	136/57.7	120/48.8	170/76.6	187/86.1	194/90	186/85.5		132/55.5	120/48.8	154/67.7	190/87.7	195/90.5	195/90.5	
3:35	137/58.3	126/52.2	176/80	191/88.3	196/91.1	192/88.8		133/56.1	122/50	157/69.4	195/90.5	195/90.5	202/94.4	
3:40	138/58.8	123/50.5	175/79.4	191/88.3	197/91.6	191/88.3		133/56.1	122/50	157/69.4	194/90	195/90.5	199/92.7	
3:45	137/58.3	122/50	176/80	191/88.3	195/90.5	192/88.8		134/56.6	127/52.7	156/68.8	195/90.5	195/90.5	200/93.3	
3:50	137/58.3	117/47.2	169/76.1	184/84.4	188/86.6	186/85.5	116/46.6	134/56.6	119/48.3	150/65.5	189/87.2	191/88.3	194/90	
3:55	137/58.3	122/50	170/76.6	185/85	190/87.7	186/85.5		134/56.6	122/50	152/66.6	191/88.3	194/90	191/88.3	
4:00	138/58.8	120/48.8	176/80	189/87.2	194/90	192/88.8		134/56.6	121/49.4	155/68.3	191/88.3	191/88.3	195/90.5	
4:05	138/58.8	116/46.6	174/78.8	187/86.1	191/88.3	190/87.7	117/47.2	135/57.2	123/50.5	153/67.2	193/89.4	190/87.7	197/91.6	
4:10	139/59.4	123/50.5	176/80	189/87.2	194/90	192/88.8		135/57.2	121/49.4	156/68.8	194/90	193/89.4	195/90.5	
4:15	139/59.4	119/48.3	171/77.2	184/84.4	189/87.2	187/86.1	118/47.7	136/57.7	118/47.7	154/67.7	190/87.7	190/87.7	187/86.1	

3:20 is the first reading with the defroster turned on

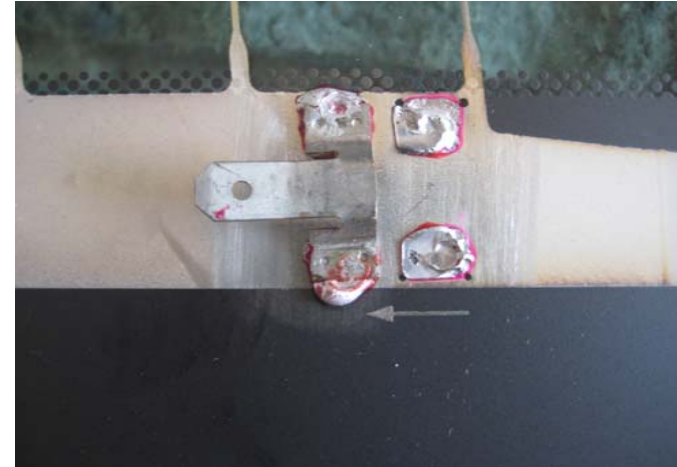
Ford Defroster Cycle			Chevy Defroster Cycle		
1	3:15	3:31	1	3:15	3:36
2	3:31	3:47	2	3:36	3:46
3	3:47	4:02	3	3:46	3:57
4	4:02	4:15	4	3:57	4:08
			5	4:08	4:15

METER #		METER #
1	CAR INTERIOR	11
2	OUTSIDE AIR	22
3	OUTSIDE GLASS	33
4	INSIDE GLASS	44
5	DRIVER'SIDE CLIP	55
6	PASSENGER SIDE CLIP	66
7	OUTSIDE TEMP (CAR THERM.)	

No damage or separation on any of the terminals following the test.



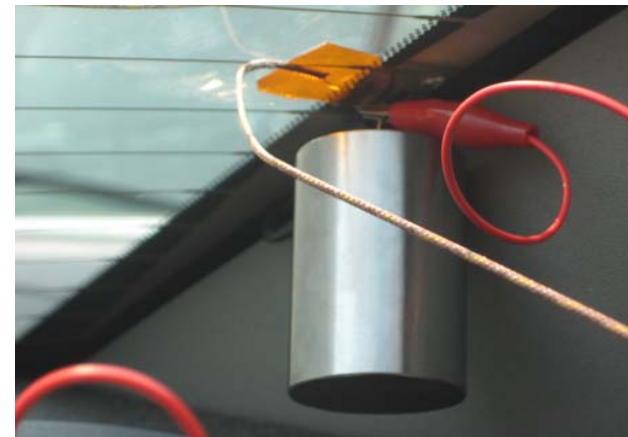
Ford Backlite with new FCF Terminal with #65 Lead Free Solder



Chevrolet Backlite with new FCF Terminal with #10 Lead Free Solder



Ford backlite with thermocouple and .5kg weight



Chevrolet backlite with thermocouple, .5kg weight, and indicator light wire



Picture taken at 3:27pm



Location:
Devils Golf Course Death Valley California



Picture taken at 4:12pm